

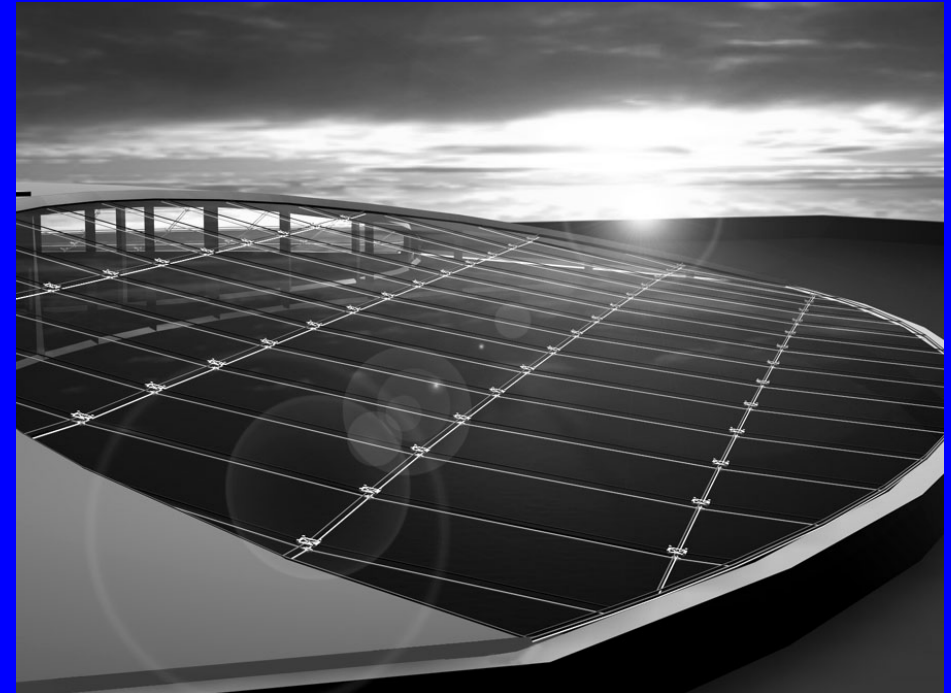
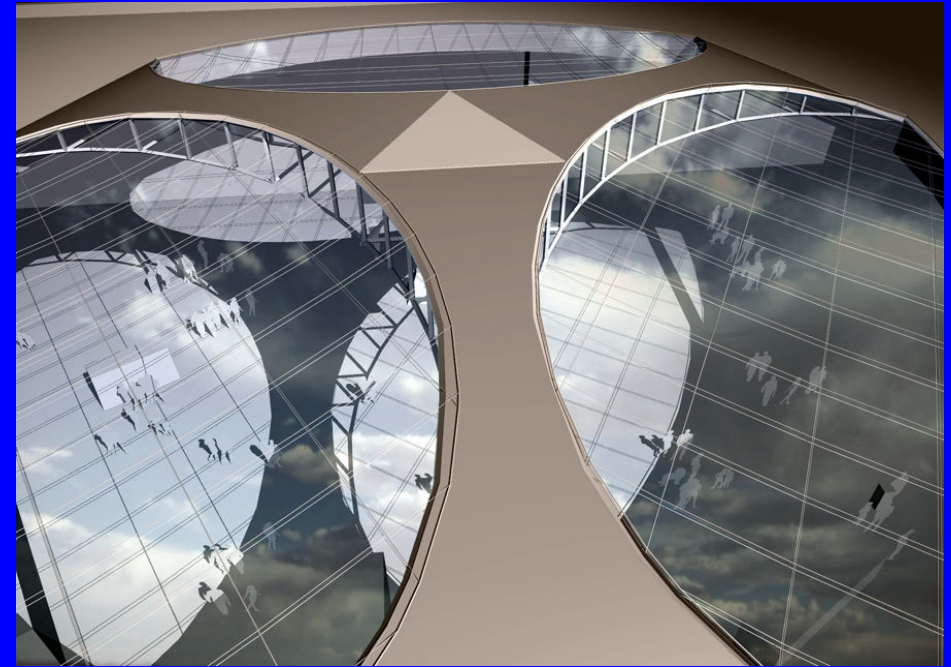
**Orlando International Airport Orlando, Florida**

**Architect HOK, Hellmuth, Obata + Kassabaum**

project description

ASI worked as a consultant to HOK Aviation in pushing the envelope of glass enclosure technology for the new Airside 2 Terminal.

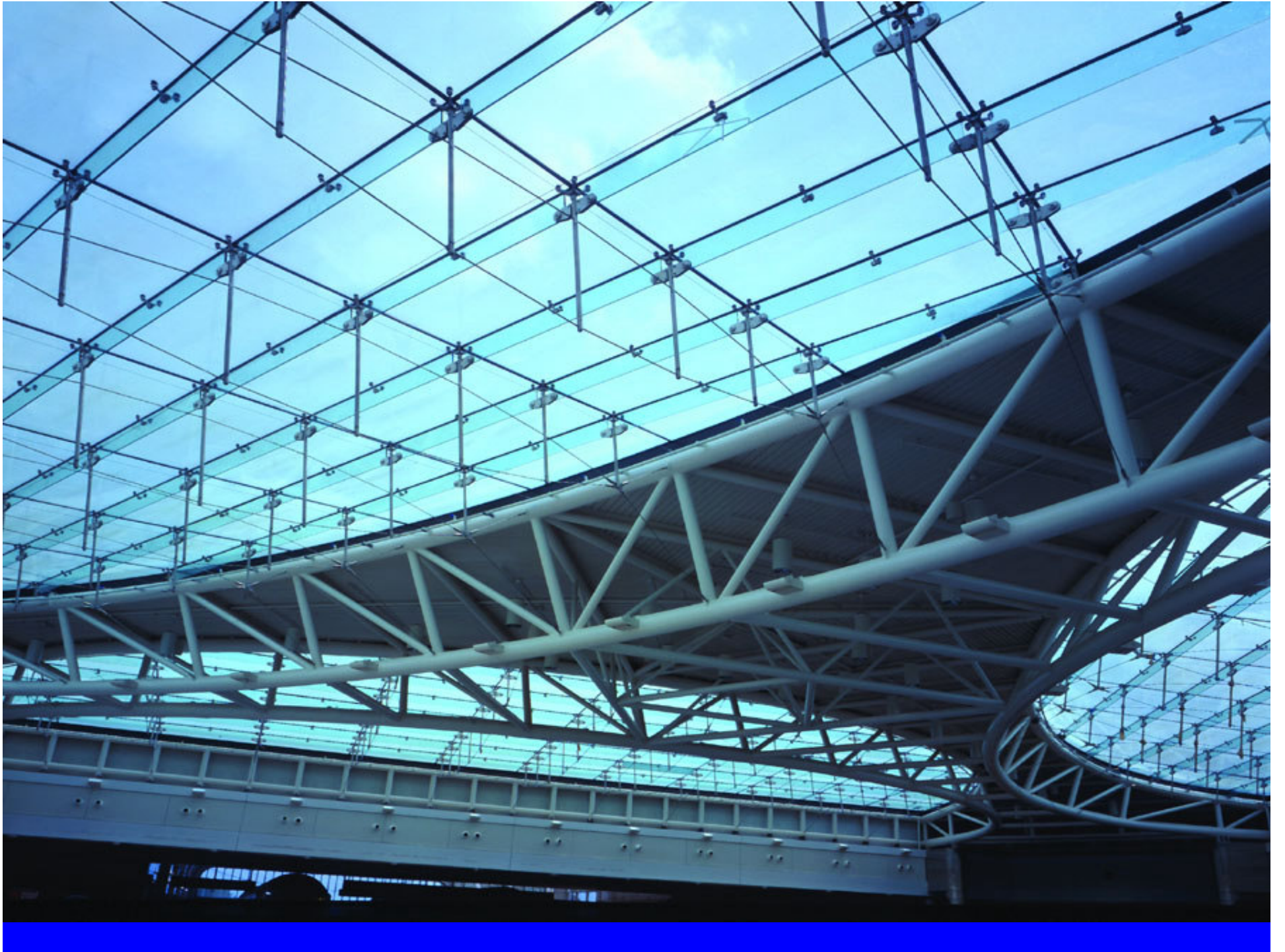
3 elliptical long-span skylight structures utilize insulated, point-supported glass that ties directly into the compression members of the cable trusses.





The cable truss system incorporates a structural glass fin that provides midpoint support for the glass panels, maximizing the transparency of the system. ASI Contract was subsequently selected to be engineer of record and builder of the glass support structures.











**THANK YOU**