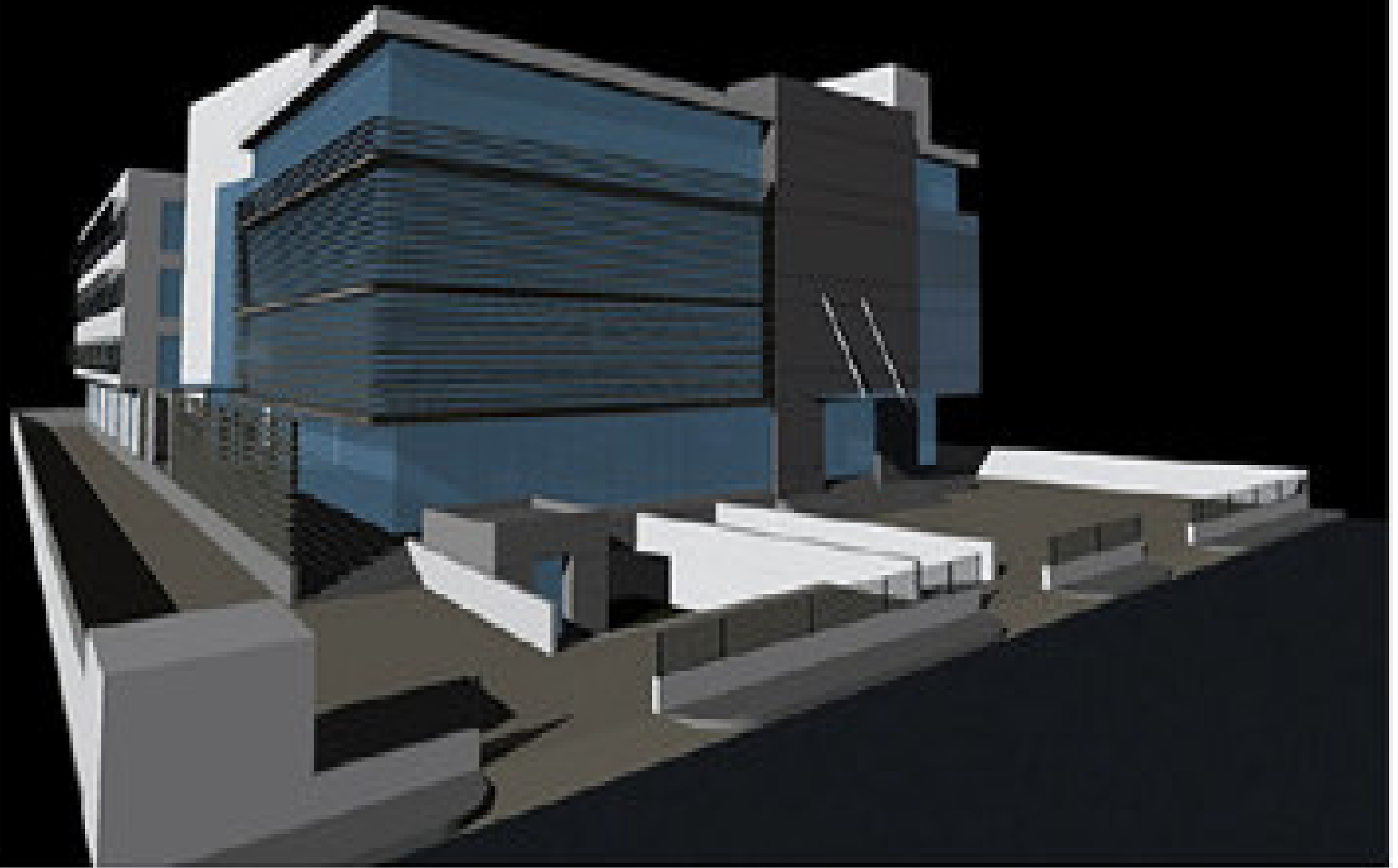
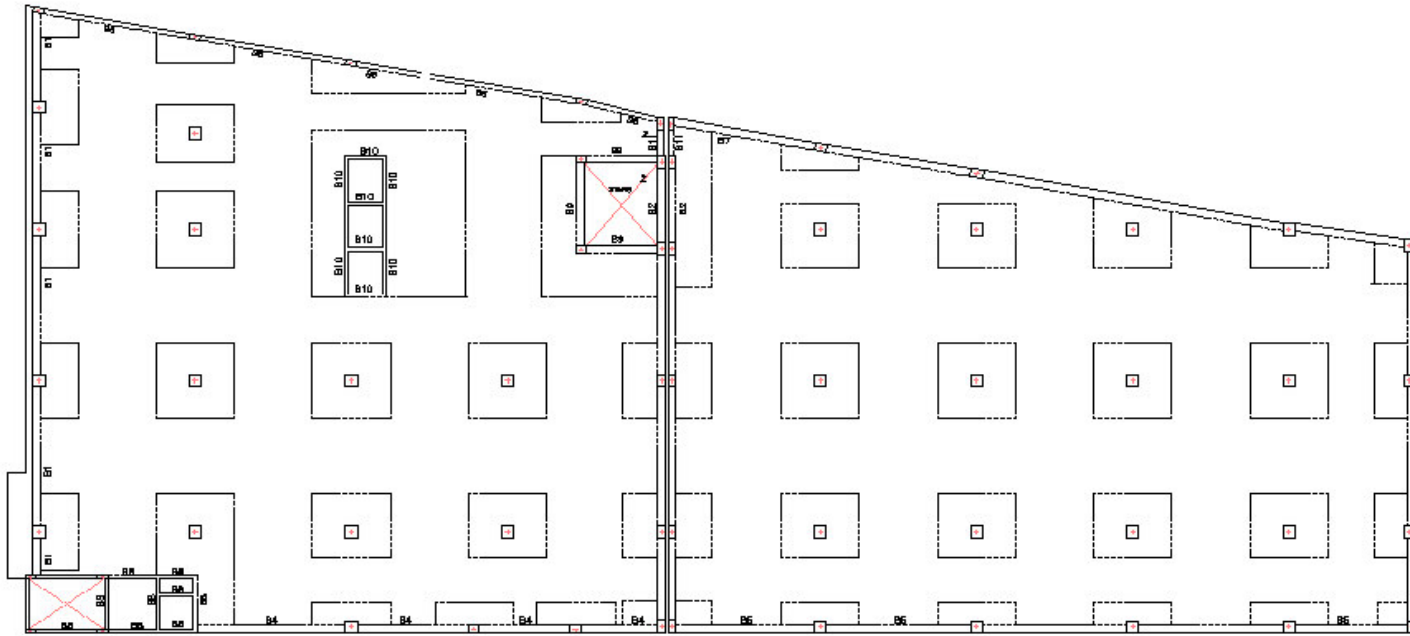


**MAAS-3 MAX Bangalore**  
**Architect: AVC Architects**

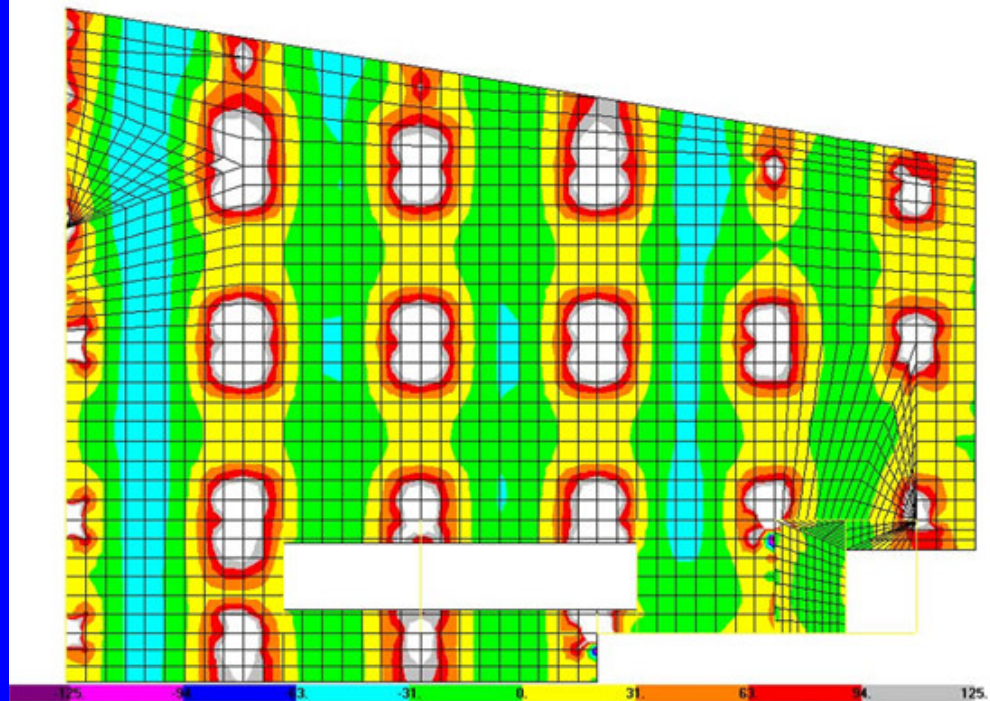
# MAAS-3





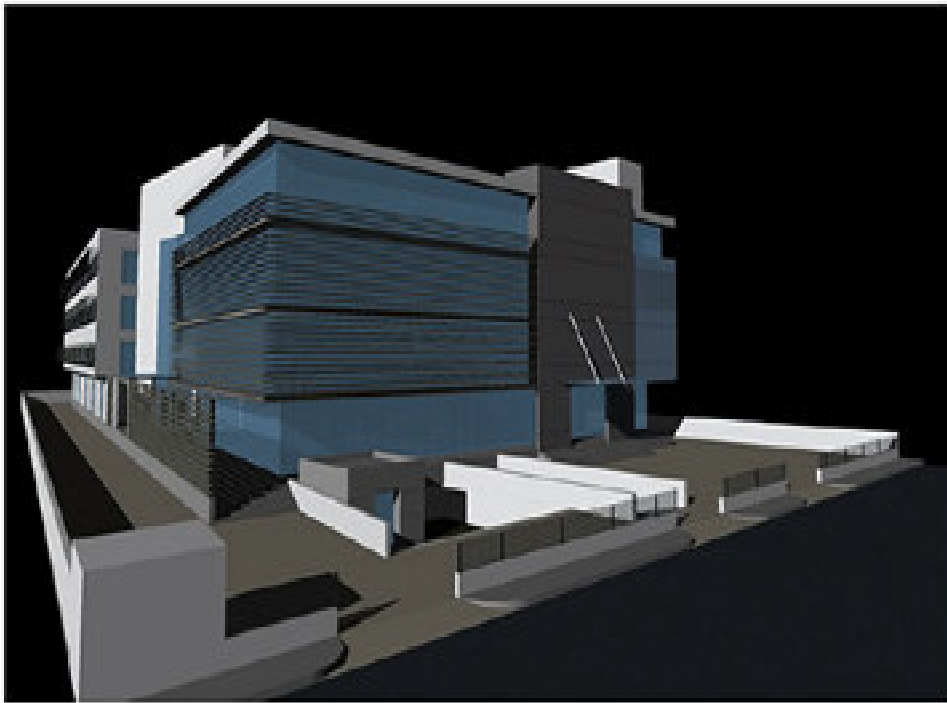
### Project- Maas-3

The building is a trapezoid in plan with an approximate dimension of 90 m length, 30M width and 15meter height. The structure consists of basement car parking floor plus 4 upper office floors and terrace. The structural system is a flat plate supported by regularly spaced vertical concrete columns, and foundation for columns are typical concrete spread footing. Since the project is located in Bangalore (Zone-2), framing system would resist both lateral and vertical loads





**Architect version**



**Max Retailer's Version**



**THANK YOU**