

Ha-Lo Headquarters Niles, Illinois

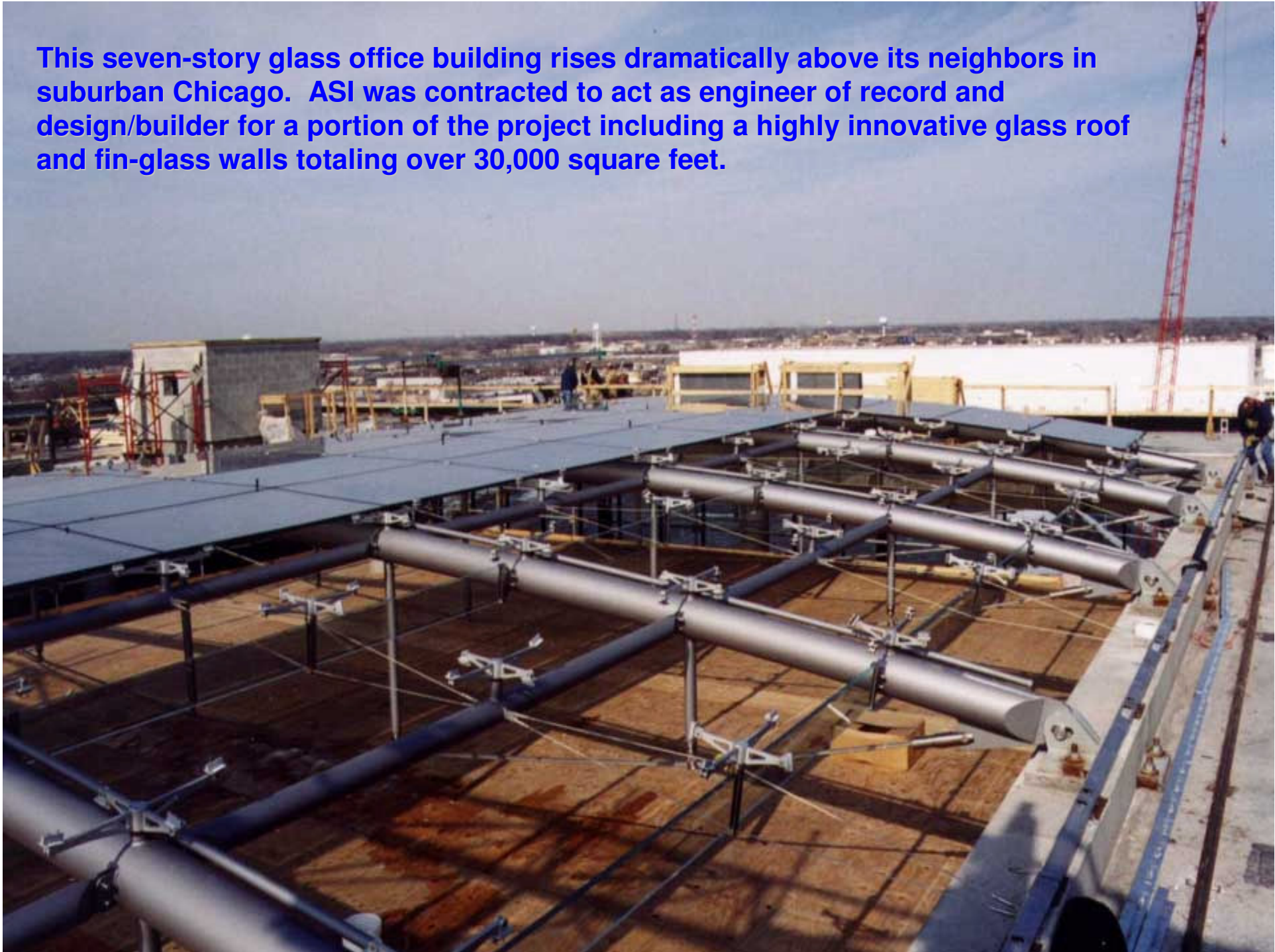
Architect Murphy/Jahn

project description
ASI as engineer of record
design+builder
glass roof
fin-glass walls
entryway doors
30,000 square feet
plus
ceiling and handrail glass
elevator tower glass
lavatory counter tops





This seven-story glass office building rises dramatically above its neighbors in suburban Chicago. ASI was contracted to act as engineer of record and design/builder for a portion of the project including a highly innovative glass roof and fin-glass walls totaling over 30,000 square feet.



Trusses were fabricated and rigged in ASI's TrussWorks facility, then installed on the roof using a rolling gantry also designed and supplied by the firm. ASI imported and installed the custom, low-iron point supported glass.





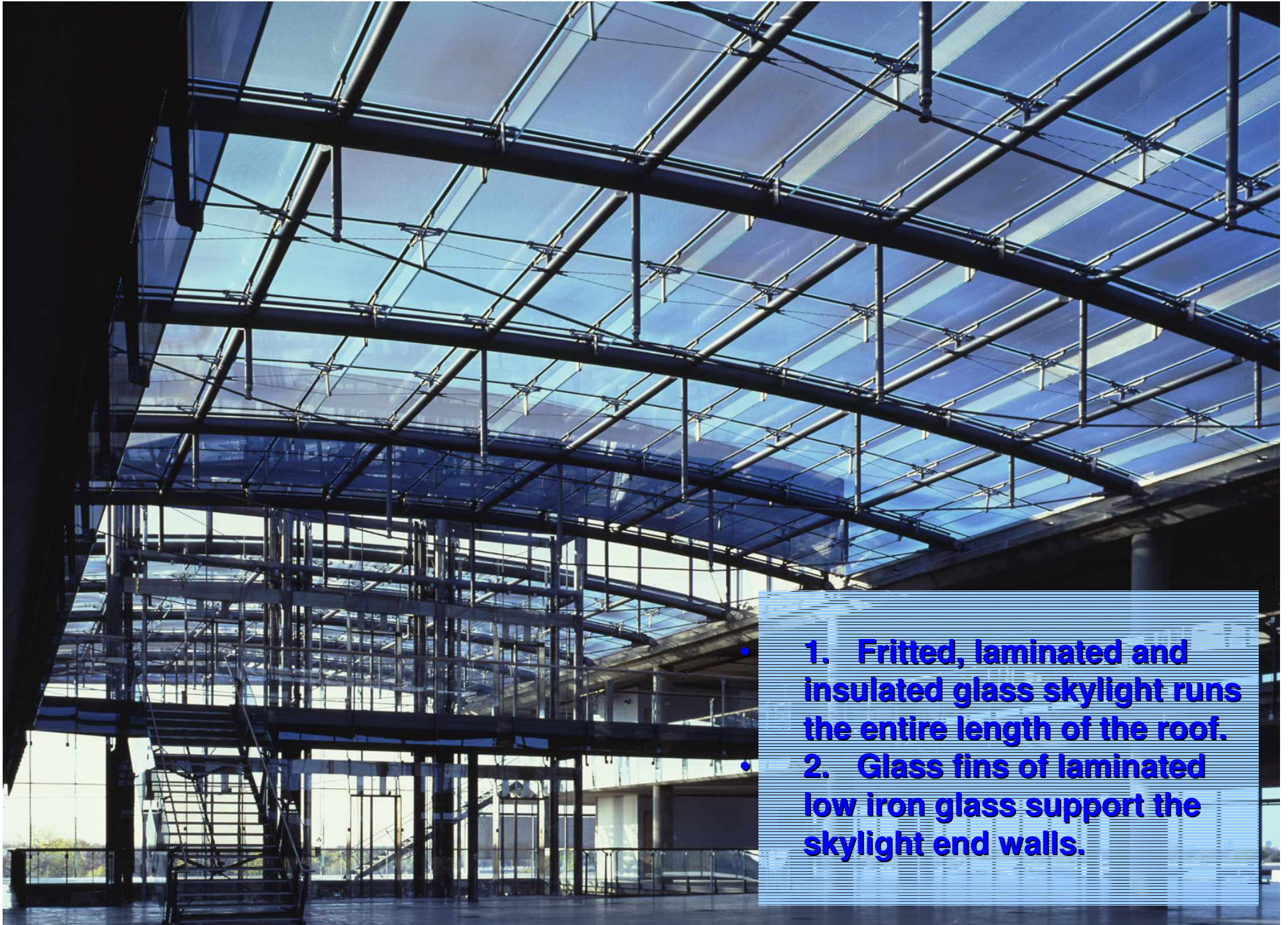
ASI Advanced Structures Inc.

Laminated fins are low iron glass as well. ASI also provided an interior glass ceiling and glass handrail system for the building.







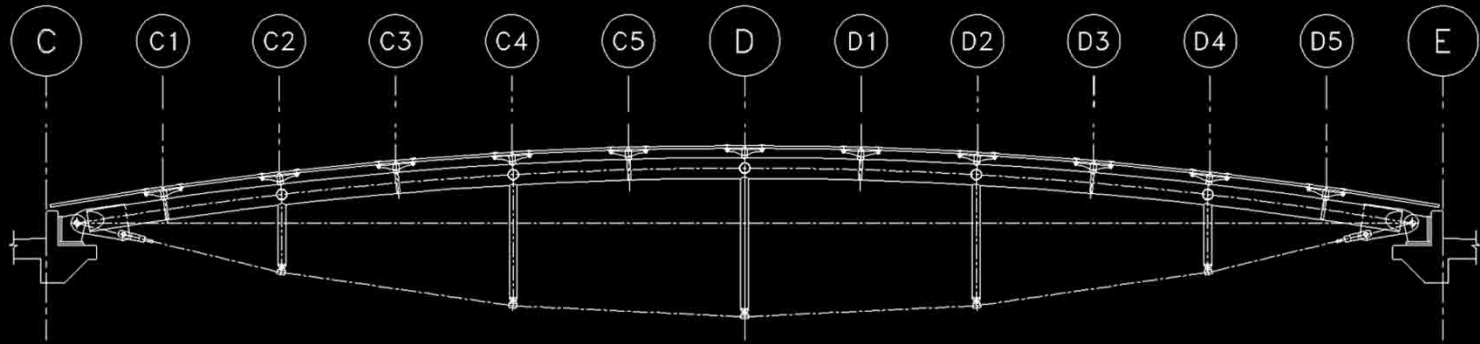


- 1. Fritted, laminated and insulated glass skylight runs the entire length of the roof.
- 2. Glass fins of laminated low iron glass support the skylight end walls.

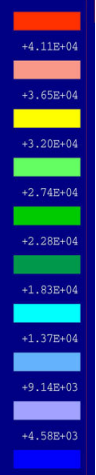
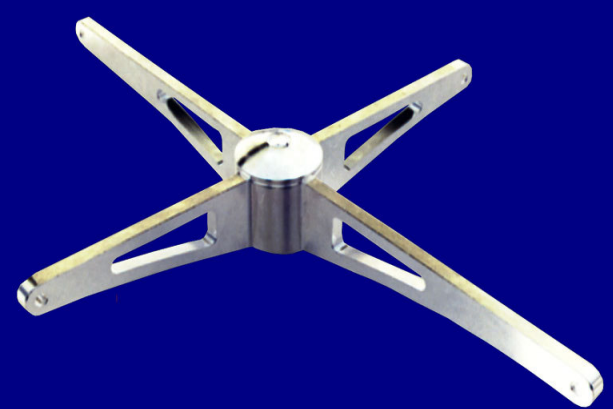
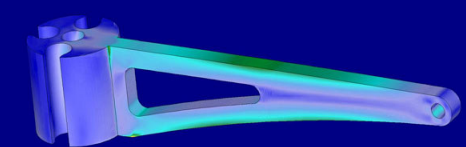
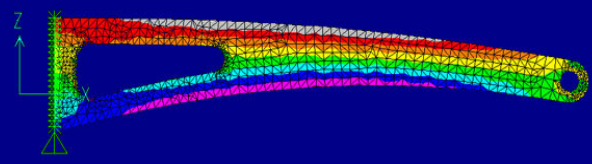
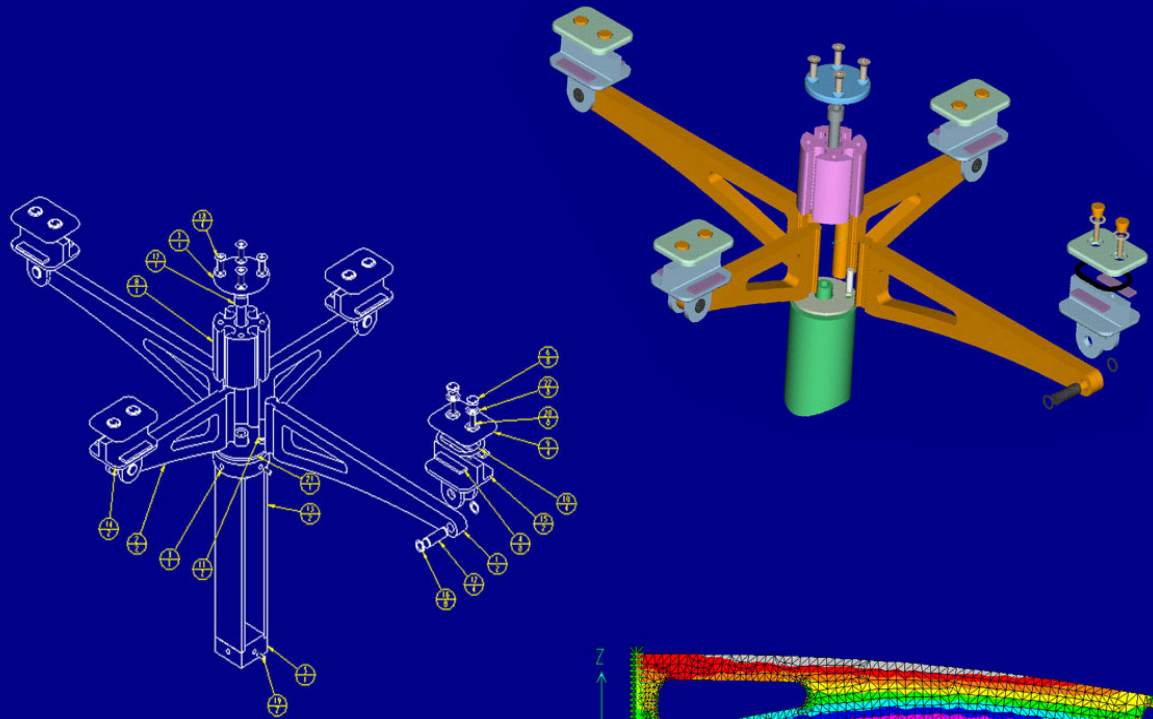


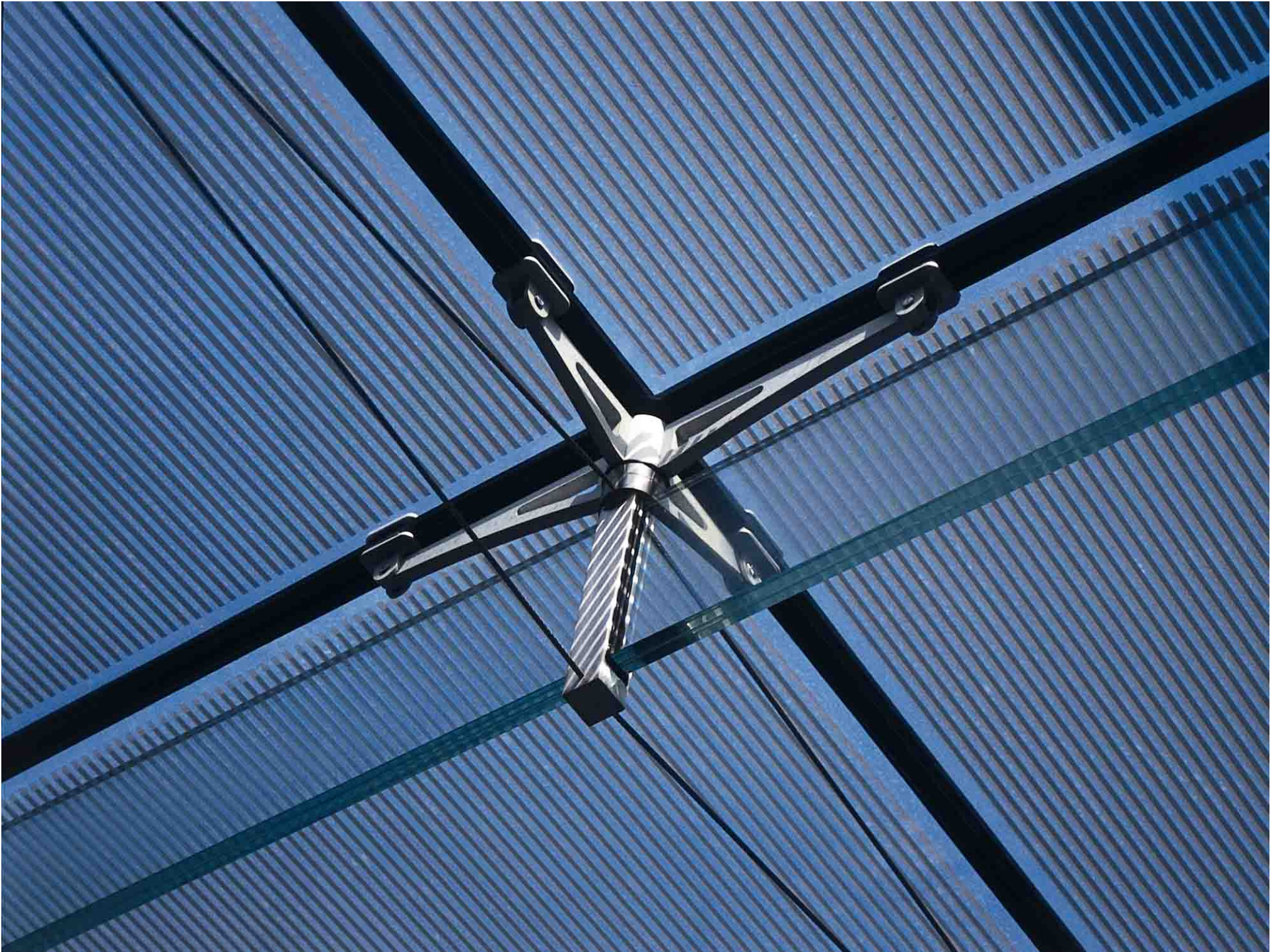


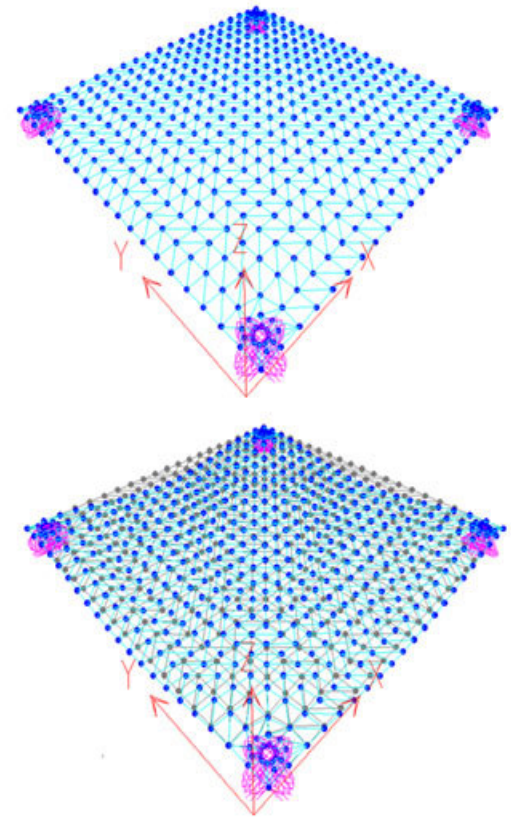
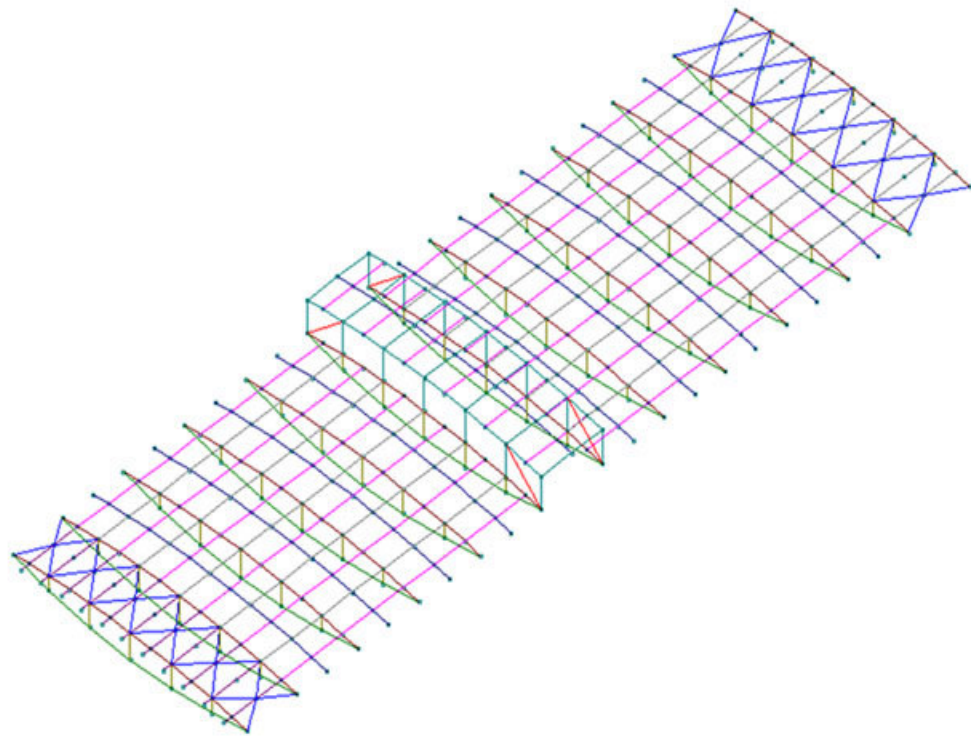
PINCHED PLATE GLASS SYSTEM



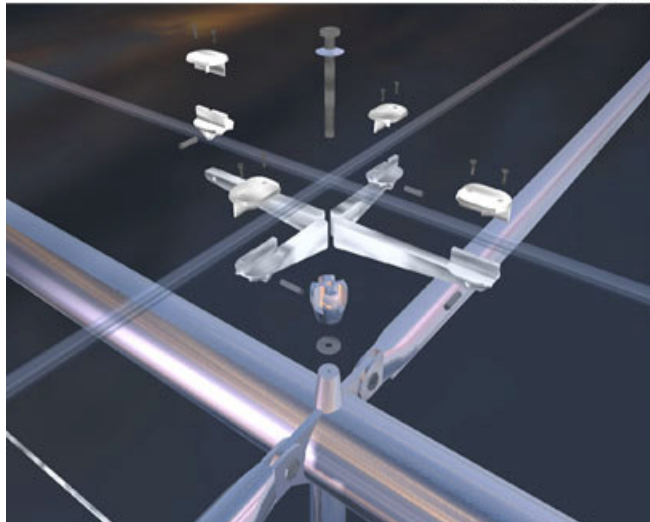




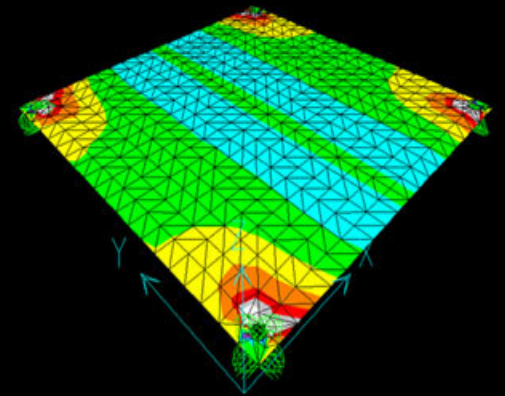


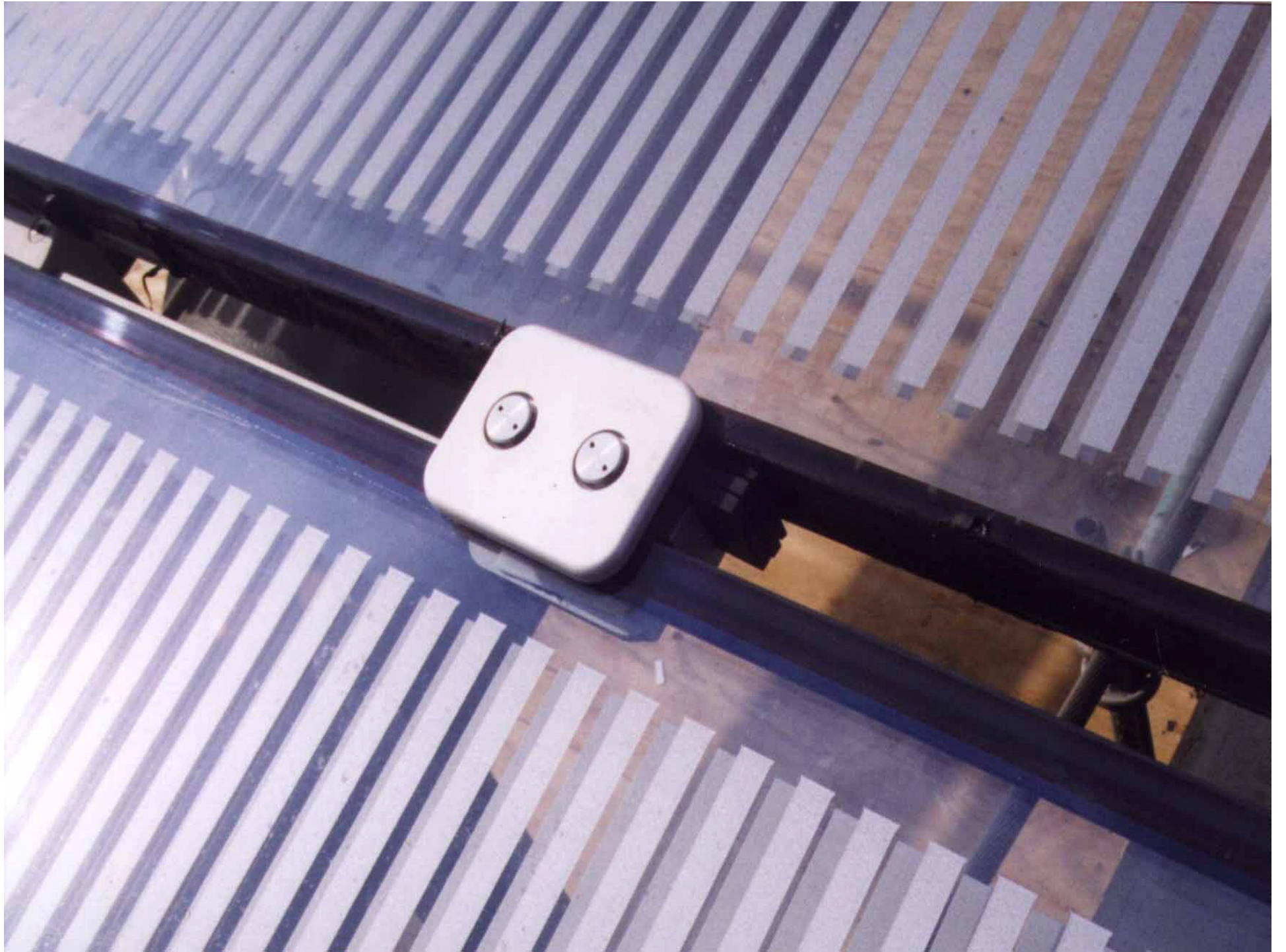


STRUCTURAL ANALYSIS



GLASS DEFLECTION & STRESS ANALYSIS







THANK YOU